

# GT AZFScreen

## Sequence-Tagged Sites Based Kit for Detection of Y Chromosome Microdeletions

Cat No. GT-11301

### Product Features

- ✓ Multiplex amplification of 19 markers (16 Sequence Tagged Sites (STS), 2 Segmental Duplication (SD) and one Short Tandem Repeat (STR) markers) in one reaction.
- ✓ GT AZFScreen markers are designed in accordance with European Molecular Genetics Quality Network (EMQN) guidelines.
- ✓ Two SD markers, Y/X b and AMXY are included for screening Klinefelter Syndrome.
- ✓ The STR marker, DXS7132, aids the detection of Klinefelter Syndrome.
- ✓ Analyzed using 5-dye capillary electrophoresis system.
- ✓ Compatible with Applied Biosystems™ 310, 3130/xl, 3500/xl and SeqStudio platforms.
- ✓ Applicable on DNA extracted from blood or blood on DNA Banking Card (DBC) or from diluted blood using GT Blood Lysis Buffer (GT BLB).
- ✓ The GT AZFScreen kit comes in two boxes, providing all the necessary reagents for multiplex PCR as well as GT500 Size Standard and GTM5 Matrix Standard for genetic analysis using capillary electrophoresis.

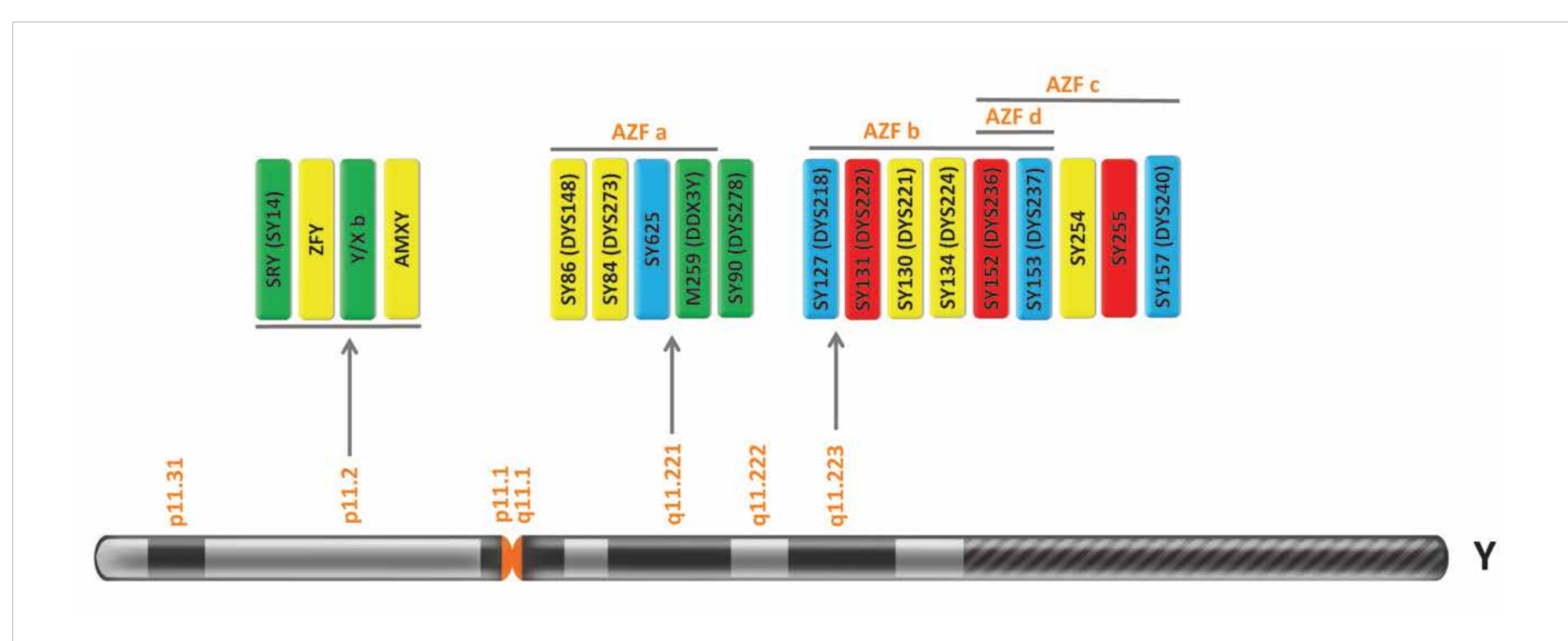


Figure 2. Locations of GT AZFScreen markers on Y chromosome in five regions.

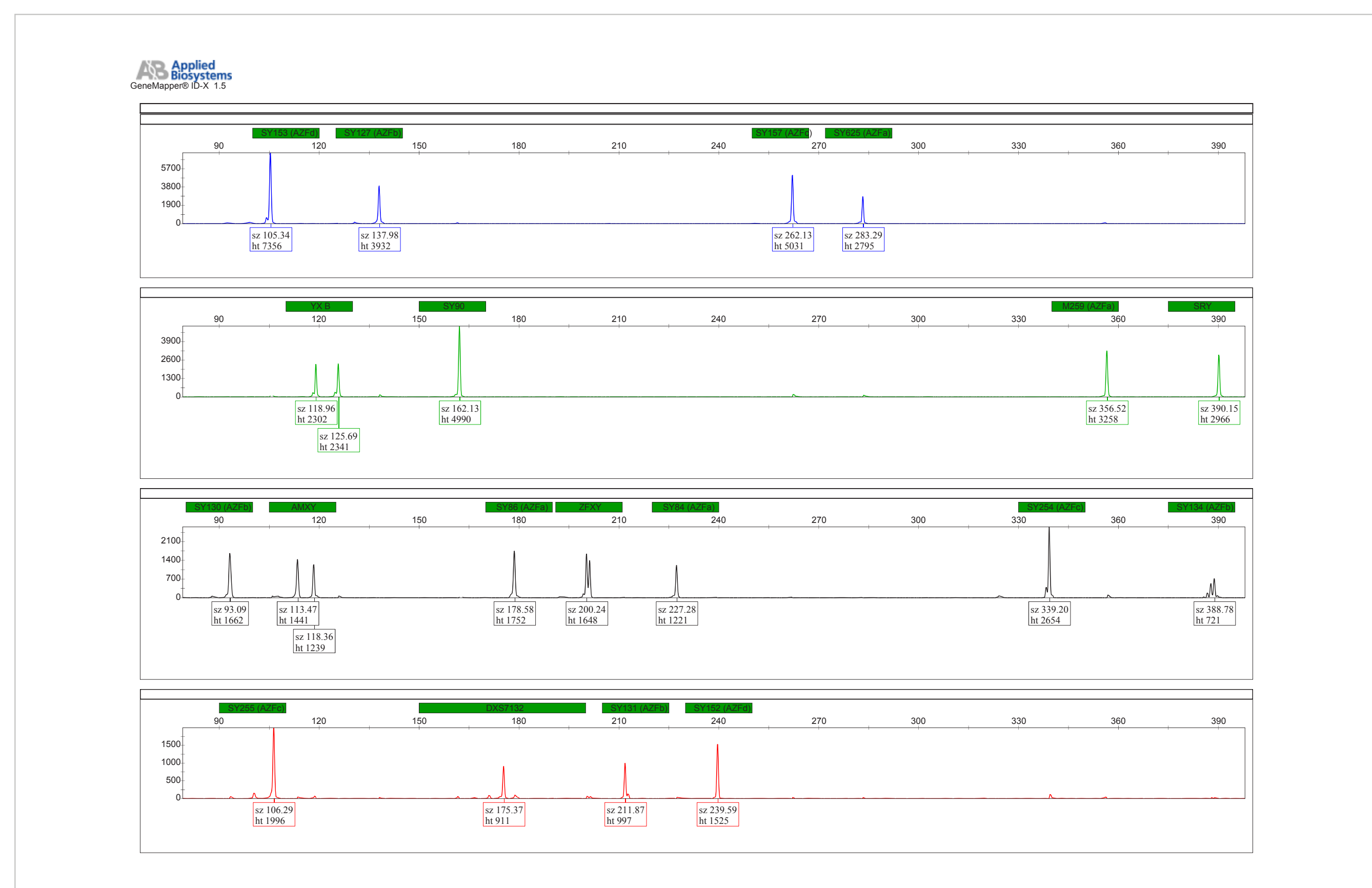


Figure 3. A profile of the Control DNA of a normal male provided with GT AZFScreen kit. One ng of DNA has been amplified using the kit.

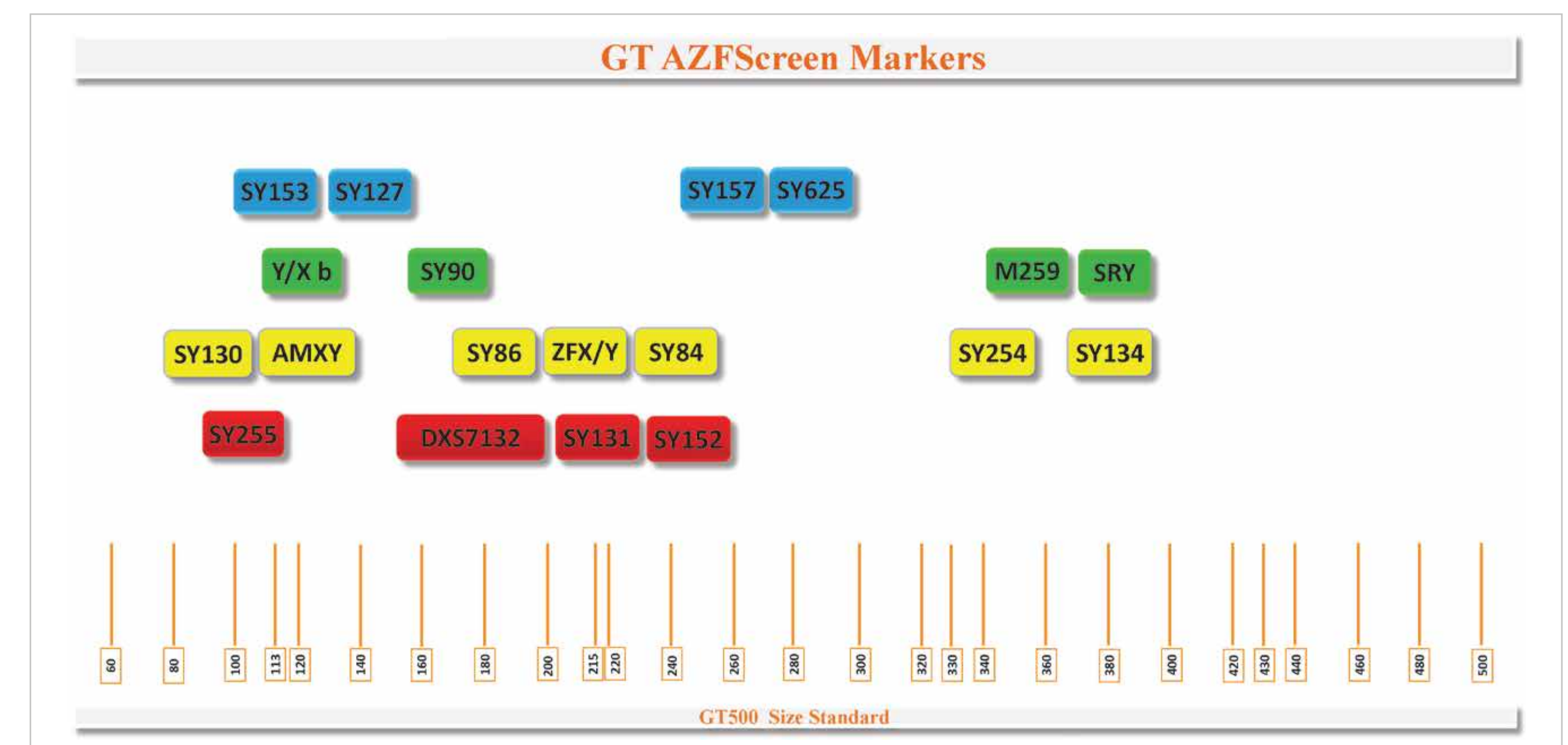


Figure 1. Map of GT AZFScreen markers

Table 1. Details on the 19 markers included in the GT AZFScreen kit

No.	Markers/Dyes	Chromosome	Size Range	Chr. Location
1	SY153 (AZFd)	Y	100-120	Yq11.223
2	SY127 (AZFb)	Y	125-145	Yq11.223
3	SY157 (AZFc)	Y	250-267	Yq11.223
4	SY625(AZFa)	Y	272-292	Yq11.221
5	Y/X b	Y, X	110-130	Yp11.2 Xq21.31
6	SY90	Y	150-170	Yq11.221
7	M259 (AZFa)	Y	340-360	Yq11.221
8	SRY(SY14)	Y	375-395	Yp11.2
9	SY130 (AZFb)	Y	80-100	Yq11.223
10	AMXY	X,Y	105-125	Xp22.2 Yp11.2
11	SY86 (AZFa)	Y	170-190	Yq11.221
12	ZFX/Y	X,Y	191-211	Xp22.11 Yp11.2
13	SY84 (AZFa)	Y	220-240	Yq11.221
14	SY254 (AZFc)	Y	330-350	Yq11.223
15	SY134 (AZFb)	Y	375-395	Yq11.223
16	SY255 (AZFc)	Y	90-110	Yq11.223
17	DXS7132	X	150-200	Xq11.2
18	SY131 (AZFb)	Y	205-225	Yq11.223
19	SY152(AZFd)	Y	230-250	Yq11.223

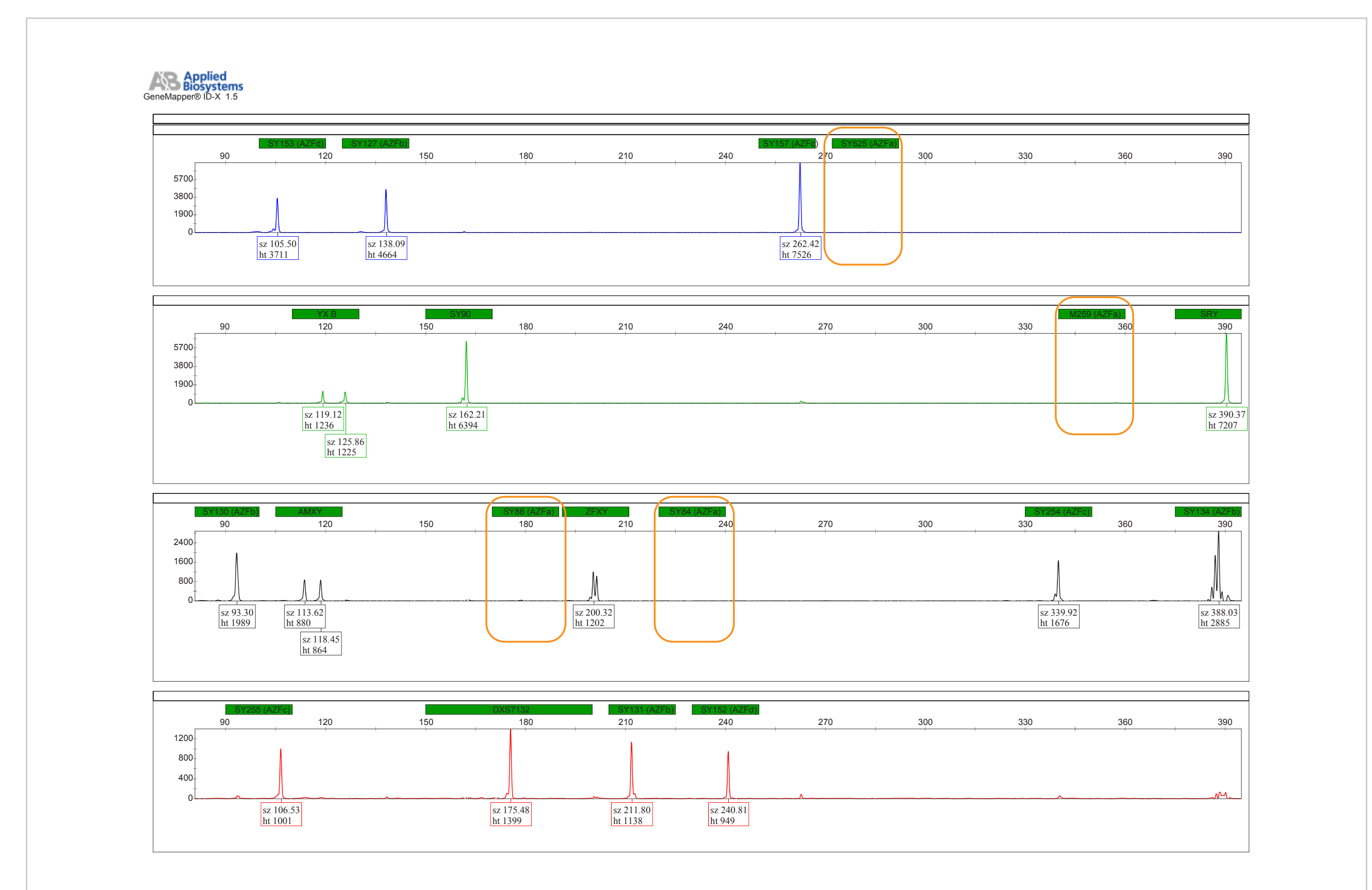


Figure 4. A sample profile of a male individual affected with infertility due to deletion of AZFa region (boxed) amplified using GT AZFScreen kit.

For further information please contact us via [info@genetek.de](mailto:info@genetek.de)

More details on Genetek products are available on our website: [www.genetek-biopharma.com](http://www.genetek-biopharma.com)

For Research Use Only